



House

3 BURLEIGH GARDENS, LONDON, N14 5AH

Per Month

£2,850

FEATURES

- Three bedrooms
- Family bathroom
- Off street parking
- Newly decorated
- Fitted kitchen
- Downstairs WC
- Rear garden
- Gas central heating



RASH & RASH

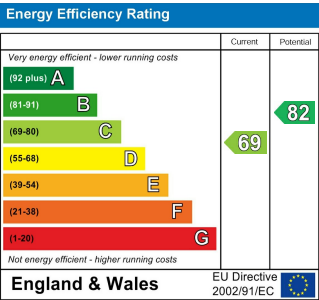
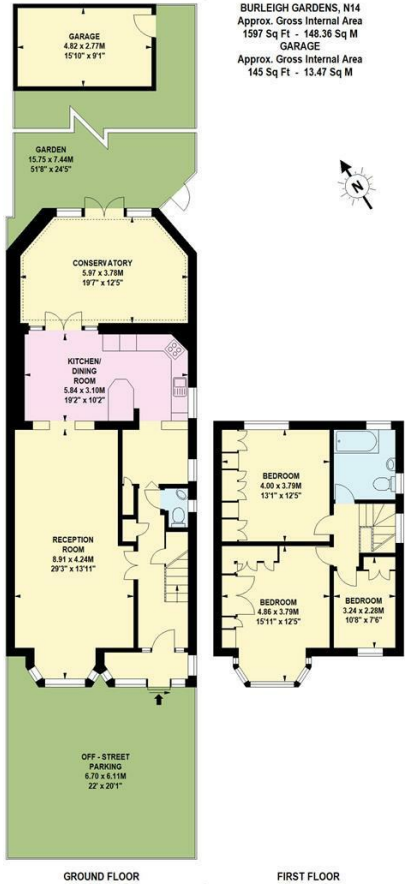
3 Bedroom House located in London

Newly decorated three bedroom semi detached house ideally situation for the local school catchments of Ashmole Primary & secondary schools. The property affords 1597sq ft of accommodation to include three bedrooms, two reception rooms, conservatory, 50' ft rear garden and off street parking for two cars. Burleigh Gardens is located within 0.4miles of Southgate underground station (Piccadilly Line) and moments from all the amenities on Chase Side. Available unfurnished.

Call us on
02088822828

info@rashandrash.com
<https://www.rashandrash.com/>

Council Tax Band
F



Agents Note: Whilst every care has been taken to prepare these particulars, they are for guidance purposes only. All measurements are approximate and are for general guidance purposes only and whilst every care has been taken to ensure their accuracy, they should not be relied upon and potential buyers are advised to recheck the measurements.

